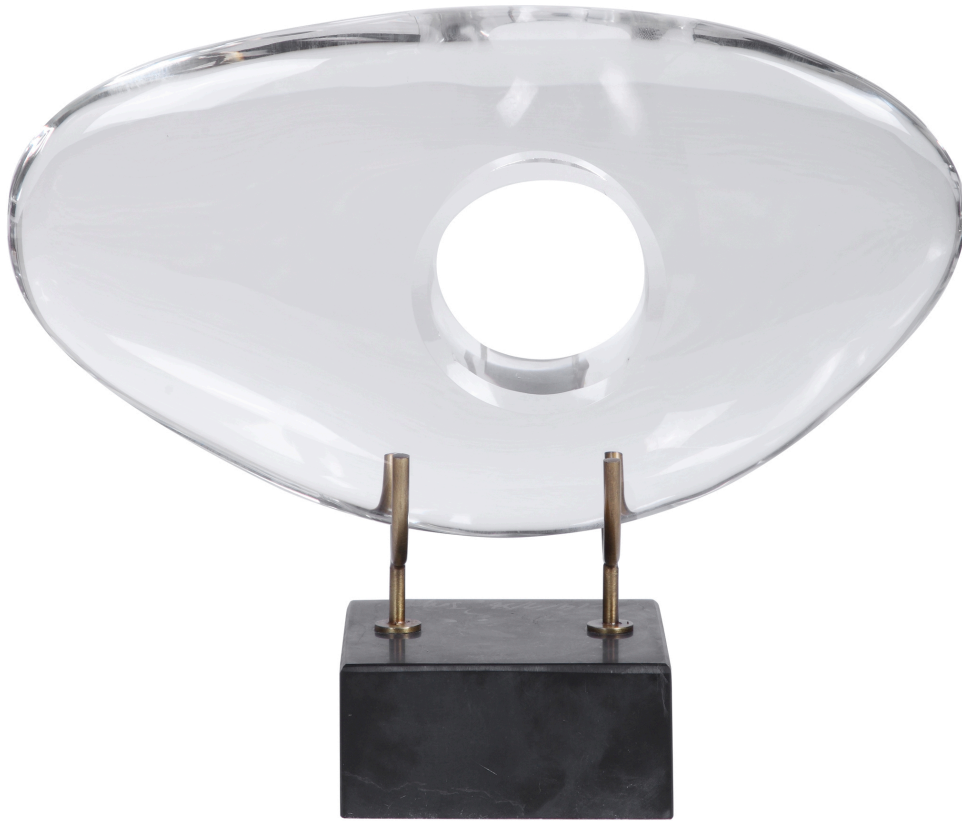


# REVELATION



## MINION SCULPTURE - CRYSTAL RECLINING

ITEM #R17781

Minion is defined in Webster's as one who is highly prized. The monolithium shape executed in crystal with a honed black marble base and brass pegs is bound to become a highly prized artistic accessory. They look great when placed individually. All the shapes are designed to coordinate and group together to create a great design statement.

<b>Dimensions:</b>	12 W X 9.75 H X 4 D (in)
<b>Weight:</b>	12
<b>Ship Via:</b>	Small Parcel
<b>UPC Number:</b>	792977767771

## Complementary Items



**MINION SCULPTURE - STONE  
TALL**

R17770 | 6.5 W X 20.25 H X 4.5 D (IN)



**MINION SCULPTURE - STONE  
MEDIUM**

R17771 | 4.5 W X 15 H X 4.5 D (IN)



**MINION SCULPTURE - STONE  
RECLINING**

R17772 | 11.5 W X 10.5 H X 3.5 D (IN)



**MINION SCULPTURE - CRYSTAL  
TALL**

R17914 | 6.5 W X 17.75 H X 4.5 D (IN)