

# REVELATION



## **ELEVATED TRAY/PLATEAU - BLACK MARBLE SMALL**

ITEM #R18024

Black marble with white veining is suspended between four metal corners finished in a rich brass. Rounded edges feel sleek and elegant, giving an art moderne feel. Creating displays of your favorite objects, or organizing spices and oils in a centralized location, are just a few of its many uses. Due to the porous characteristics of this natural stone, acidic items and constant moisture should be avoided.

<b>Dimensions:</b>	16.5 W X 2 H X 10.5 D (in)
<b>Weight:</b>	16
<b>Ship Via:</b>	Small Parcel
<b>UPC Number:</b>	792977758809

## Complementary Items



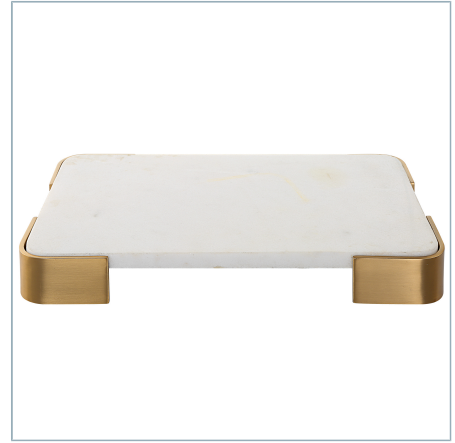
**ELEVATED TRAY/PLATEAU -  
PANDA MARBLE MEDIUM**

R18025 | 20.5 W X 2 H X 12.5 D (IN)



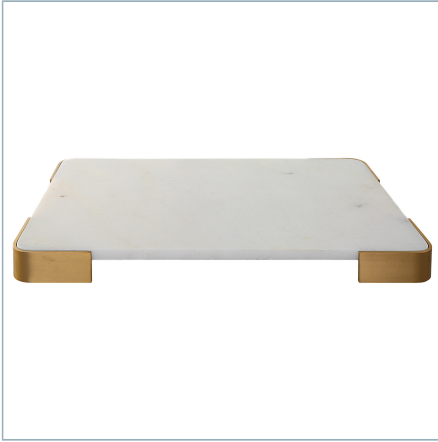
**ELEVATED TRAY/PLATEAU -  
BLACK MARBLE LARGE**

R18023 | 24.5 W X 2 H X 15.5 D (IN)



**ELEVATED TRAY/PLATEAU -  
WHITE MARBLE SMALL**

R18022 | 16.5 W X 2 H X 10.5 D (IN)



**ELEVATED TRAY/PLATEAU -  
WHITE MARBLE LARGE**

R18021 | 24.5 W X 2 H X 15.5 D (IN)